



Investing for tomorrow, delivering today.

The Public Health Approach to Violence Prevention

**New Mexico Sentencing Commission
Criminal Justice Coordinating Council and
Crime Reduction Grant Act Recipient Convening
March 13, 2024**

Liza Suzanne, Violence Prevention Program Coordinator

Presentation Overview

1. Public Health & Approach to Violence Prevention
2. NM Dept. of Health – Mission and Organization
3. Funding Opportunities
 - Violence Prevention- Contractual Agreements
 - Violence Intervention Fund- Grant

Can Sheep Prevent Violence?



On this sheep-scale,
how are you
feeling today?

What is Public Health?

Public health is "the science and art of preventing disease, prolonging life, and promoting health through the organized efforts and informed choices of society, organizations, public and private communities, and individuals"

–CEA Winslow

"

THERE IS AN ENORMOUS DIFFERENCE BETWEEN SEEING PEOPLE AS THE VICTIMS OF INNATE SHORTCOMINGS AND SEEING THEM AS THE VICTIMS OF STRUCTURAL VIOLENCE. INDEED, IT IS LIKELY THAT THE STRUGGLE FOR RIGHTS IS UNDERMINED WHENEVER THE HISTORY OF UNEQUAL CHANCES, AND OF OPPRESSION, IS ERASED OR DISTORTED.

– PAUL FARMER

"

PUBLIC HEALTH IS A POWERFUL TOOL TO LEVEL THAT PLAYING FIELD, TO BEND THE ARC OF OUR COUNTRY AWAY FROM DISTRUST AND DISPARITIES AND BACK TOWARDS EQUITY AND JUSTICE.

– LEANA S. WEN

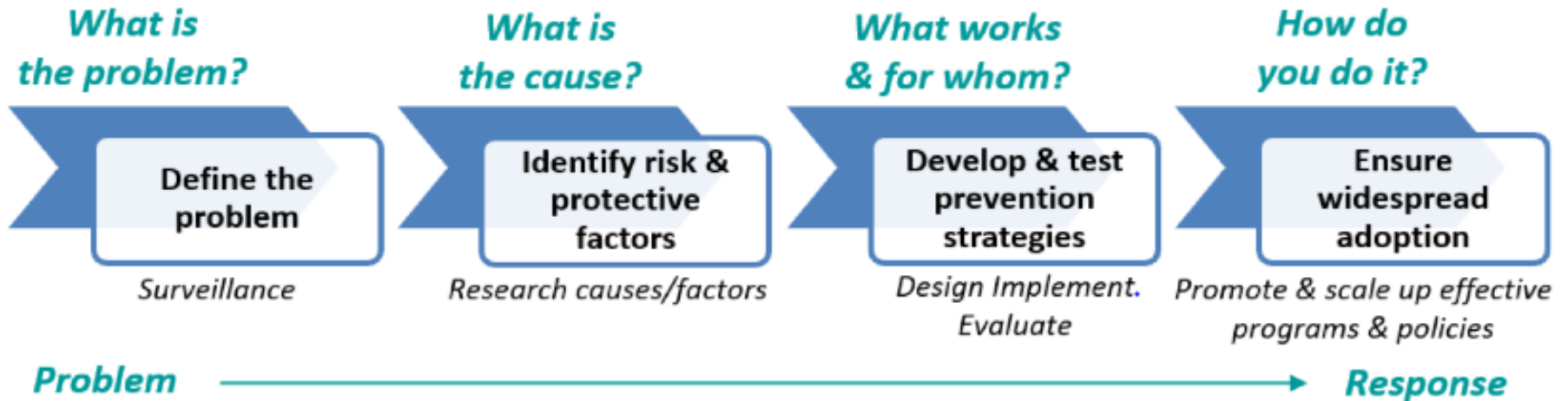
"

WHY TREAT PEOPLE AND SEND THEM BACK TO THE CONDITIONS THAT MADE THEM SICK?

– MICHAEL MARMOT

<https://www.goodgoodgood.co/articles/public-health-quotes>

The Public Health Approach



<https://www.cityofevanston.org/government/departments/health-human-services/public-health-services>

Investing for tomorrow, delivering today.

1190 S. St. Francis Drive • Santa Fe, NM 87505 • Phone: 505-827-2613 • Fax: 505-827-2530 • nmhealth.org

The Public Health Approach to Violence Prevention

The public health approach to violence prevention acknowledges that violent behavior arises from

- contextual,
 - biological,
 - environmental,
 - systemic and
 - social stressors.
-
- Violent behavior is not a matter which can be solved via the criminal justice system alone.



Investing for tomorrow, delivering today.

New Mexico Department of Health

MISSION:

To ensure health equity,
we work with our partners to promote health outcomes
for all people in New Mexico.

VISION:

A healthier New Mexico



NEW MEXICO DEPARTMENT OF HEALTH

Investing for tomorrow, delivering today.

Epidemiology & Response Division

Injury & Behavioral Epidemiology Bureau

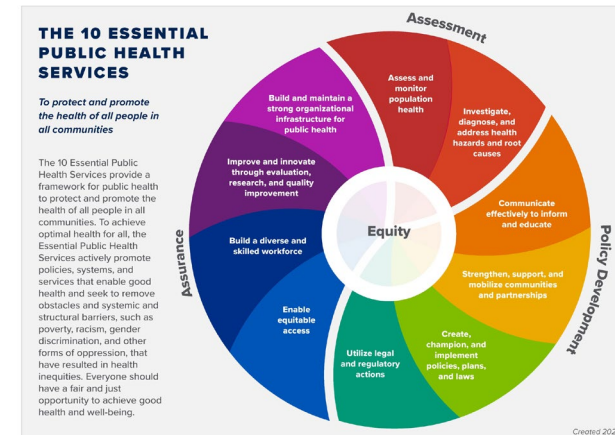
7 Sections in Bureau:

- Administration
- Alcohol Misuse Prevention
- **Injury & Violence Prevention**
- Overdose Prevention
- Substance Use Epidemiology
- Survey
- Survey Epidemiology

Injury & Behavioral Epidemiology Bureau

Essential Public Health Services:

- Strengthen, support, and mobilize **communities** and partnerships to improve health
 - Convene partners and coalitions
 - Implement evidence-based/evidence-informed/community-informed prevention strategies
- Improve and innovate public health functions through ongoing **evaluation**, research, and continuous quality improvement
 - Evaluate and improve interventions



Centers for Disease Control and Prevention (CDC)

<https://www.cdc.gov/publichealthgateway/publichealthservices/essentialhealthservices.html>

Injury & Behavioral Epidemiology Bureau

Essential Public Health Services, cont.:

- **Assess and monitor population health** status, factors that influence health, and community needs and assets-
 - Collect data about health-related practices, health status, risk and resilience factors, and violent death circumstances (BRFSS, YRRS, VDRS)
- **Communicate** effectively to inform and educate people about health, factors that influence it, and how to improve it-
 - Conduct data analysis to guide priorities and program implementation
 - Convene partners and coalitions

CDC: “To protect and promote the health of all people in all communities”

<https://www.cdc.gov/publichealthgateway/publichealthservices/essentialhealthservices.html>



Investing for tomorrow, delivering today.

Office of Injury and Violence Prevention

4 Units:

- Injury Prevention Programs
- Violence Prevention Programs
- Epidemiology
- Evaluation



Office of Injury & Violence Prevention

Injury & Violence Prevention Program Areas:

- Violence and Gun Violence
- Sexual Violence
- Suicide
- Childhood Injury
- Older Adult Falls
- Statewide Injury (CDC Grant: ACES, TBI, & Transportation Safety)

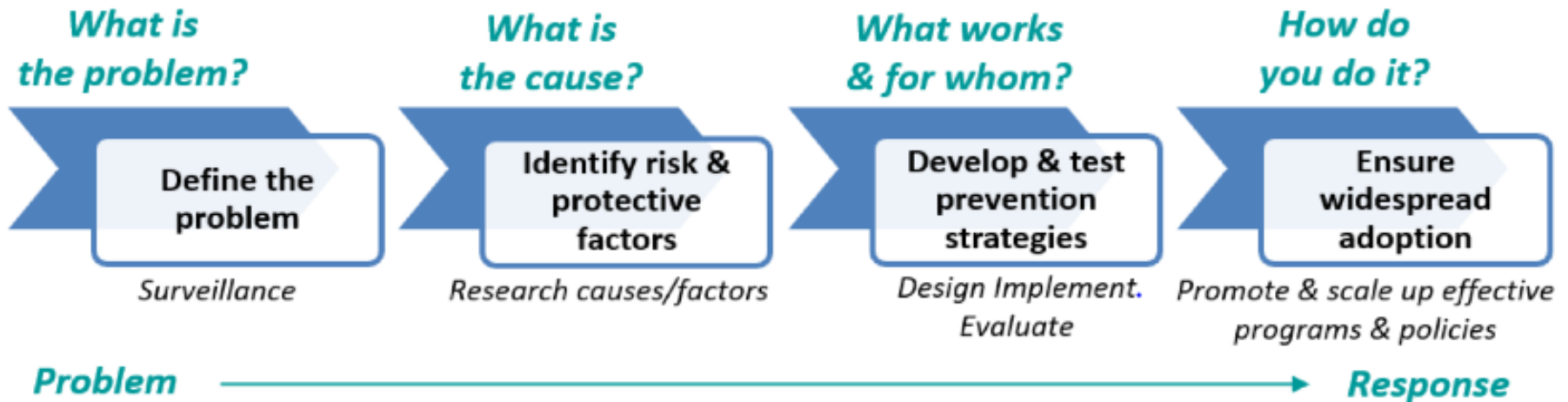
Epidemiology & Evaluation Focus Areas:

- Firearm Epidemiology
- Injury Epidemiology
- National/New Mexico Violent Death Reporting System
- NM Child Fatality Review Process

Trauma-Informed Acknowledgements

- Today's presentation includes data on multiple types of violence including suicide and homicide. Violence has profound emotional and physical consequences on individuals, families, and communities.
- This presentation may be representative of stories of people in this room, or people we know. Although data will be presented in large numbers and overall rates, they originate from our lived experiences. Parts of this presentation may be troubling to hear.
- If you begin to experience an uncomfortable reaction to this material, you are encouraged to take a break- maybe stand up and stretch, play with a fidget toy, do a grounding exercise, or drink some water. Please remember to take a few deep breaths!
- Does anyone have other suggestions for self-care options during this presentation?

The Public Health Approach



- The public health approach to violence prevention acknowledges that violent behavior arises from contextual, biological, environmental, systemic and social stressors.
- Violent behavior is not a matter which can be solved via the criminal justice system alone.

<https://www.cityofevanston.org/government/departments/health-human-services/public-health-services>

Violence is a public health issue

Can you identify multiple forms of violence?

*What is
the problem?*

**Define the
problem**

Surveillance

- adverse childhood experiences
- intimate partner violence
- sexual violence
- elder abuse
- suicidal behavior
- youth violence
- bullying

Violence in its many forms can affect the health of victims, perpetrators, and the communities in which both live.

Different forms of violence are interconnected and often share root causes.

Homicides in New Mexico, 2022

278

All Homicides
2022

214

Firearm Homicides
2022

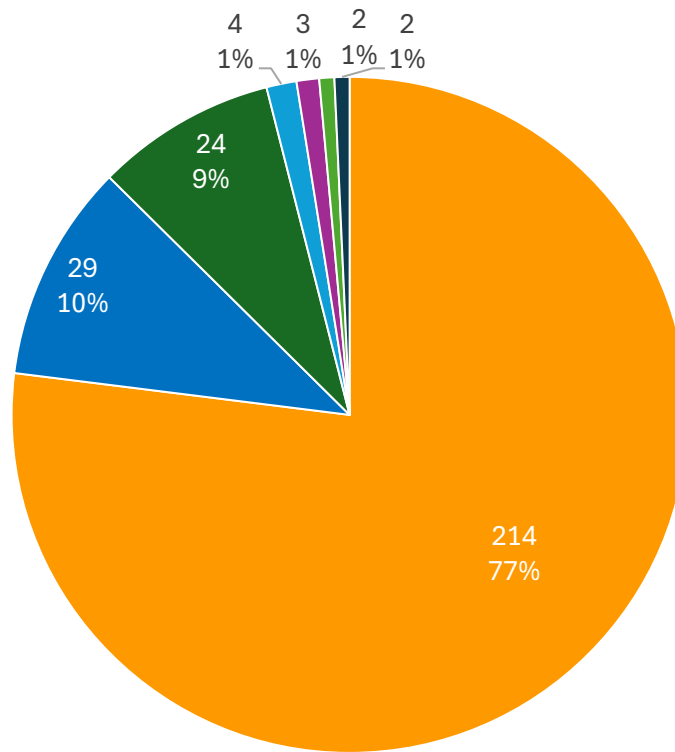
Source: NM-IBIS and BVRHS (unpublished data) last accessed on Feb 2, 2024.

SOURCE: New Mexico firearm deaths from 2012. Last accessed from NM-IBIS (https://ibis.doh.nm.gov/indicator/view/InjuryFirearmDeath.Year.NM_US.html) on 2/6/24.

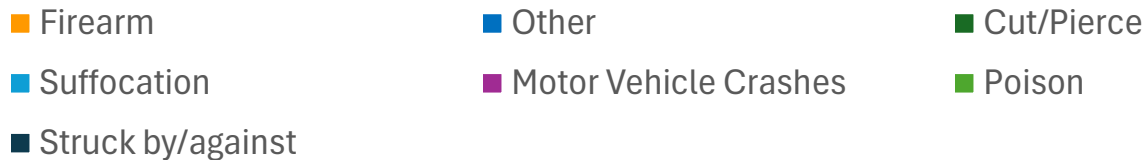
SOURCE: U.S. age adjusted firearm death rate from 2022. Last accessed from CDC WONDER (Provisional data from Multiple Cause of Death Files, 2018-2022). Last accessed on 2/28/24.

SOURCE: New Mexico firearm deaths from 2022. Last accessed from the New Mexico Bureau of Vital Records & Health Statistics (BVRHS) (unpublished data) on 2/6/24.

Homicides by Mechanism, NM, 2022



- **77%** Firearm
- **10%** Other (inc. explosive materials, pushing or placing victim in front of moving object, and unspecified)
- **9%** Cut/Pierce
- **1%** Suffocation
- **1%** Motor Vehicle Crash
- **1%** Poison
- **1%** Struck by/against



Firearm Deaths in New Mexico

550

All firearm deaths
2022

3rd

Highest
age-adjusted firearm
death rate in U.S.
2022

From 2012 to 2022
Firearm deaths
increased

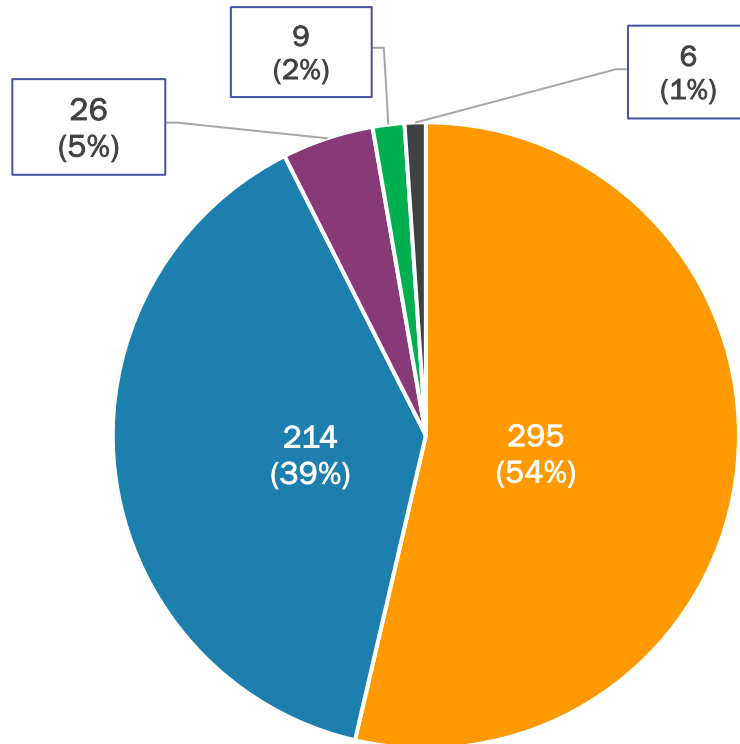
74%

SOURCE: New Mexico firearm deaths from 2012. Last accessed from NM-IBIS (https://ibis.doh.nm.gov/indicator/view/InjuryFirearmDeath.Year.NM_US.html) on 2/6/24.

SOURCE: U.S. age adjusted firearm death rate from 2022. Last accessed from CDC WONDER (Provisional data from Multiple Cause of Death Files, 2018-2022). Last accessed on 2/28/24.

SOURCE: New Mexico firearm deaths from 2022. Last accessed from the New Mexico Bureau of Vital Records & Health Statistics (BVRHS) (unpublished data) on 2/6/24.

Firearm Deaths by Intent, NM, 2022



- **54%** Suicide
- **39%** Homicide
- **5%** “Legal Intervention”
(refers to deaths due to injuries inflicted by police or other law enforcement agents, including military on duty)
- **2%** Undetermined
- **1%** Unintentional

■ Suicide ■ Homicide ■ Legal Intervention ■ Undetermined ■ Unintentional

Risk & Protective Factors:

*What is
the cause?*

**Identify risk &
protective
factors**

Research causes/factors

Risk factors

Characteristics that precede injury and are associated with a higher likelihood of negative outcomes

Protective factors

Characteristics associated with a lower likelihood of negative outcomes or that reduce a risk factor's impact

Social-Ecological Model

Risk and protective factors occur at the individual, family, community, and societal cultural levels and can be biological, psychological, and cultural

<https://www.cdc.gov/violenceprevention/aces/riskprotectivefactors.html>

Identify Risk Factors

What risk factors can you identify for violence?

What individual, societal, environmental, historical circumstances lead to acts of violence?

- Witnessing and/or experiencing violence
- Cultural norms that support aggression toward others
- Rigid social beliefs about “masculine” and “feminine”
- Low cohesion neighborhoods (where residents don’t support and trust each other) / Social isolation
- Weak educational and legal systems
- Antisocial peer/friend groups
- Structural racism / Marginalized identity
- Unemployment / Family conflict / Substance use

Identify Protective Factors

What protective factors can you identify for violence?

What individual, societal, environmental, historical circumstances decrease acts of violence?

- Economic, gender, and racial equality
- Connection to caring adults and cultural activities
- Non-violent problem-solving skills / Positive youth development programs
- Access to mental health and substance use services
- Trauma-informed behavioral interventions
- Coordination of resources and services among community agencies
- Support - including connectedness to one's community, pro-social peers, and schools, along with safe environmental spaces

Preventing Violence

*What works
& for whom?*

**Develop & test
prevention
strategies**

*Design Implement.
Evaluate*

- **Involve members of impacted communities** in all aspects of development, implementation, and evaluation of prevention strategies
- **Change social norms** to discourage violence, encourage healthy masculinity, and allow safe expression non-binary gender expression
- **Mobilize communities** to specifically hold systems accountable
- **Reduce risk factors** such as violent problem solving, exposure to violence, acceptance of systemic poverty, and perpetuation of racial discrimination
- **Increase protective factors** such as economic, gender, and racial equality, safe environmental spaces, and social cohesion

Questions about the public health approach to preventing violence?



Ensure Widespread Adoption: Funding for Violence Prevention

Funding Opportunities

- Violence Prevention-
Contractual Agreements
- Violence Intervention Fund-
Grant

*How do
you do it?*



**Ensure
widespread
adoption**

*Promote & scale up effective
programs & policies*

Contracts and funding awards are available – what would you like to do in your communities to prevent violence?

Violence Prevention Program

NMDOH Contractual Agreements

- Violence prevention activities
- Small purchase contracts
- Intergovernmental Grant Agreements
- Memorandums of Agreement
- Write your proposal today to:
 - Connect youth to caring adults and activities
 - Teach non-violent problem-solving skills
 - Create community cohesiveness

STATE OF NEW MEXICO
New Mexico Department of Health
PROFESSIONAL SERVICES CONTRACT [REDACTED]

THIS AGREEMENT is made and entered into by and between the State of New Mexico, **DEPARTMENT OF HEALTH**, hereinafter referred to as the "Agency," and **TEWA Women United**, hereinafter referred to as the "Contractor," and is effective as of the date set forth below upon which it is executed by the Department of Finance and Administration (DFA).

IT IS AGREED BETWEEN THE PARTIES:

1. **Scope of Work.**
The Contractor shall perform the following work pursuant to **RFP#IBEB-SA-2019**:

TASK #	TASK	DELIVERABLES	DUE DATE
1.	Technical Assistance: a. Participate in technical assistance visits or calls with	a. Documentation of technical assistance calls with DOH SVP Coordinator including time date and meeting notes.	a. Quarterly

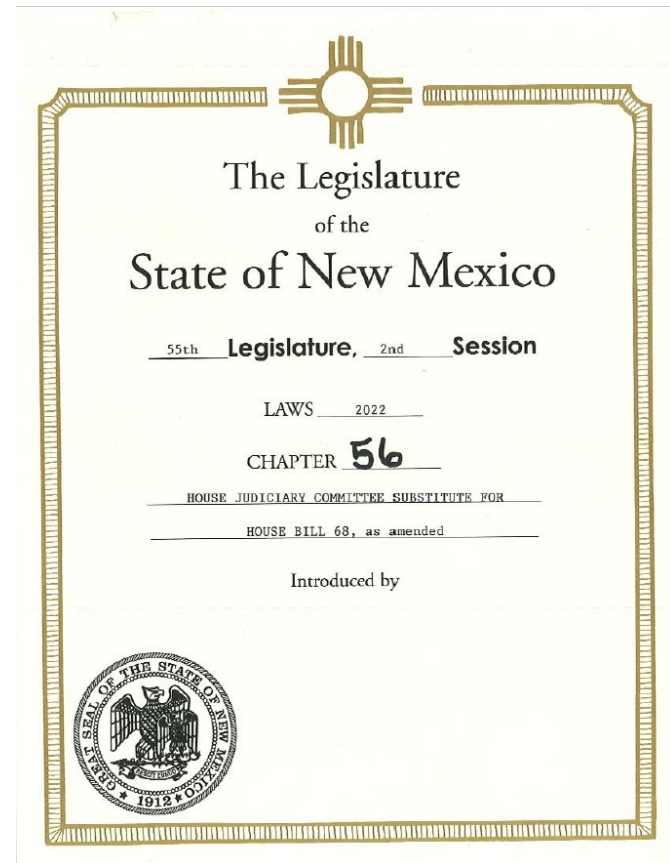


Violence Intervention Fund

NMDOH Grant

Violence Intervention Program Act

- NM Legislature 2022
- Chapter 56- for HB68
- \$9 Million
- 3 Fiscal Years
- Only governmental entities are eligible to apply



Violence Intervention Fund

Eligibility Criteria (Gov.)

- A. All Federally recognized tribal governments in NM.
- B. A county that experienced 20 or more firearm deaths per calendar year during at least two of five years between 2018 and 2022. (8)
- C. A county that had a 2021 population less than 100,000 that experienced 10 or more firearm deaths per calendar year or had a firearm death rate higher than the statewide rate during at least two of five years between 2018 and 2022. (19)
- D. An applicant that demonstrates a unique and compelling need for resources to address the impact of homicides, shootings, and aggravated assaults in their community.

1. Bernalillo
2. Chavez
3. Dona Ana
4. McKinley
5. Sandoval
6. San Juan
7. Santa Fe
8. Valencia

1. Chavez
2. Colfax
3. Curry
4. Eddy
5. Grant
6. Lea
7. Lincoln
8. Luna
9. McKinley
10. Otero
11. Quay
12. Rio Arriba
13. Roosevelt
14. San Miguel
15. Sierra
16. Socorro
17. Taos
18. Torrance
19. Valencia

Violence Intervention Fund

Applications Should Describe How To:

- implement a coordinated, community-based strategy for reducing violence
- support individuals at high risk for violence by
 - Deterring engagement in firearm violence
 - Resolving potentially violent disputes before they occur
 - Connecting them to education, employment, and housing services
- provide peer mentoring, trauma-informed services, and culturally responsive mental health support to individuals impacted by gun violence
- authentically engage community members to build trust and collaboration between stakeholders

Evidence-Based Policing Practices

- **Hot Spots Policing:**
 - Relies on increased police visibility and intelligence-led offender targeting (e.g., crime analysis and mapping) rather than generalized “stop and frisk” or other dragnet tactics.
- **Place Network Investigations**
 - Place-based strategy designed to identify and disrupt networks of criminogenic places.
 - Violent place networks identified with Risk Terrain Modeling, traditional crime analysis, and local police knowledge and intelligence.
- **Focused Deterrence**
 - Longer-term, holistic and resource-intensive strategy to reduce violence, involving multiple law enforcement and community partners.
 - The goal is to change the behavior of high-risk offenders through a combination of deterrence, incapacitation (arrest), community involvement, and the provision of alternatives to violence.



Reproduced with permission from Thaddeus Johnson, PhD, Assistant Professor, Department of Criminal Justice and Criminology, Andrew Young School of Policy Studies, Georgia State University. Retrieved on 3/8/2024

Investing for tomorrow, delivering today.

1190 S. St. Francis Drive • Santa Fe, NM 87505 • Phone: 505-827-2613 • Fax: 505-827-2530 • nmhealth.org

Violence Intervention Fund

Recipient Examples

**Dona Ana County-
Community Based
Organizations**

Grantees are required to use at least fifty percent (50%) of their grant funds for the purpose of initiating contracts with one or more community-based service providers.

**City of Albuquerque &
Bernalillo County-
Violence Intervention
Program Model**

Grantees are required to include an evidence-based policing practice

Dona Ana County- Community Based Organizations

Dona Ana Sherriff's Office is the county law enforcement. Implement a policing intervention, launch a multimedia campaign and distribute gun locks, and strengthen services for victims of violent crimes

Center for Health Innovation (CHI) is a nonprofit entity dedicated to advancing community health. Host a conference focused on violence and gun violence.

Federally Qualified Health Centers (FQHC), Amador Health Center and La Clinica de Familia are FQHCs, to bridge the gun violence knowledge gap between healthcare providers and community by training Community Healthcare Workers in gun violence prevention to identify, support, and refer victims effectively

La Casa is a nonprofit organization with the mission to support everyone affected by domestic violence. Implement Coaching Boys to Men in public school sports teams and a dynamic "community mobilization approach" that engages local youth to address the issue of violence against women.

La Piñon is a nonprofit organization dedicated to assisting survivors of sexual assault, child abuse and their families. Implement the Positive Actions curriculum with a strategic focus on prevention efforts aimed at vulnerable youth who are at a higher risk of encountering gun violence.

Albuquerque Community Safety-Violence Intervention Program (VIP)



<https://www.cabq.gov/acs/violence-prevention-and-intervention/vip>

Investing for tomorrow, delivering today.

1190 S. St. Francis Drive • Santa Fe, NM 87505 • Phone: 505-827-2613 • Fax: 505-827-2530 • nmhealth.org

Violence Intervention Fund

Project Resources

There are several violence reduction strategies that have proven successful in the United States:

- [“CrimeSolutions”](#) (National Institute of Justice, Office of Justice Programs)
- [Giffords Healing Communities](#)
- [Cities United report](#)
- [Everytown City GRIP](#)
- [BJA community-violence-intervention](#) (Bureau of Justice Assistance)
- [Hospital Based Violence Intervention Programs \(HVIP\)](#)
- [Group Violence Intervention](#)
- [Cure Violence](#)
- [Trauma Recovery Center Model](#)
- [Advance Peace](#)

Violence Intervention Fund

Project Resources, cont.

Measurement and evaluation technical resources:

- [EvaluACTION | VetoViolence \(cdc.gov\)](#);
- <https://www.nsvrc.org/prevention/evaluation-toolkit>;
- [Social Determinants of Health Information Exchange Toolkit - Community Commons](#);
- [Connections Lab: Home \(safestates.org\)](#)

Questions about this grant?



Thank you for listening, now it is time to hear from you-

Contact Information for Violence Prevention:

- Liza Suzanne, Violence Prevention Program Coordinator
 - ☐ Liza.Suzanne@doh.nm.gov
 - ☐ 505-470-7264

Please contact me with questions or requests for information and ideas for funding