

New Mexico dataXchange Platform



**Criminal Justice Coordinating Council and
Crime Reduction Grant Act Recipient
Convening**

April 19, 2023

JID Does IT Justice

1

The NM dataXchange Platform...

- ❑ Is a strategic asset for data-driven decision making
- ❑ Reduces manual data entry and streamlines reporting requirements
- ❑ Provides a unique, integrated view of justice data
- ❑ Enables better service outcomes for constituents

**A powerful tool that can put data at the center of your planning,
policies, and decisions**



JID Does IT Justice

2

2

It's Here: Inter-Agency Data Sharing for Justice Partners

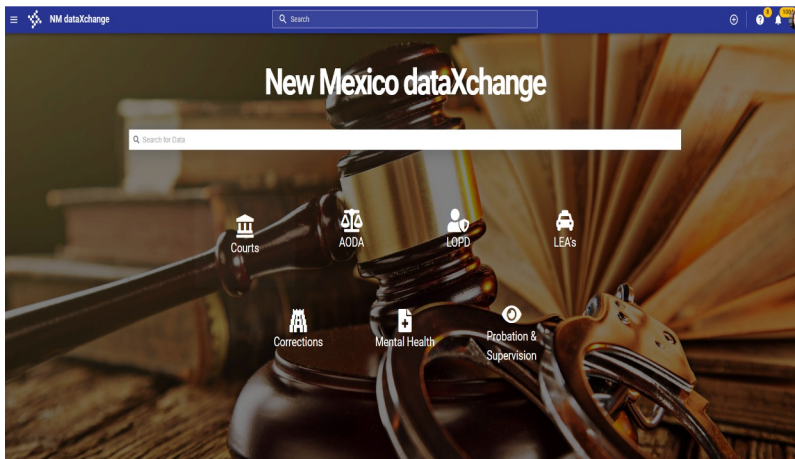
- ❑ Justice partners benefit from an integrated, secure approach to sharing data
- ❑ The New Mexico Sentencing Commission's mandate includes facilitating the sharing of criminal justice information between agencies
- ❑ The Administrative Office of the Courts partnered with NMSC in 2019 to create a data sharing network in support of this goal
- ❑ The NM dataXchange platform went live in 2020 as a pilot with state court data accessible to our criminal justice partner users
- ❑ We continue to expand and add data to the platform, increasing the value to all users
- ❑ Data integration grants are available from NMSC

There is no cost to participate on the platform. Subscription costs are covered by the Administrative Office of the Courts (AOC)



3

dataXchange - How To Get Started



Users can navigate to a Justice Partner's team to access data, or navigate to view all datasets that have been shared internally to all users

Search for a specific dataset by name or use a wildcard search

Datasets can also be shared privately, with an individual or a team of users



4

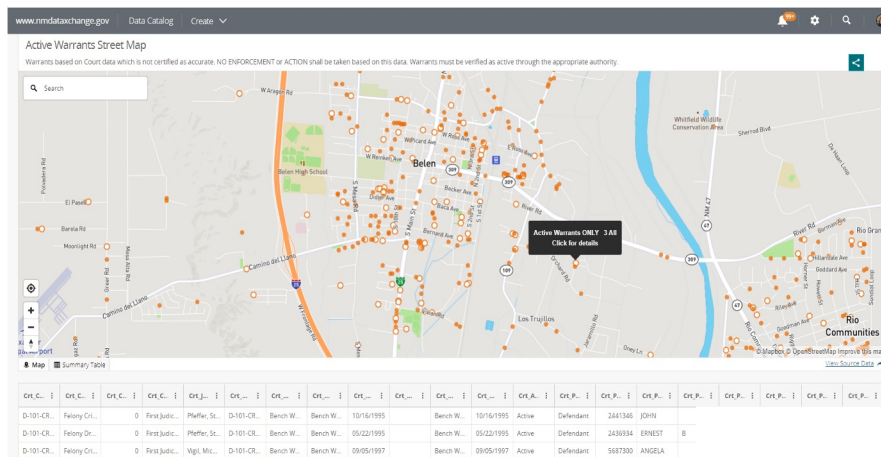
What Data is Available Today?

- ❑ **NM Courts**
 - Notice of Hearings
 - Open/Active Warrants
 - Active Warrants Street Map
 - Release Orders/Condition of Release
 - Domestic Violence Orders of Protection
 - Criminal Dispositions - 2000 to Present Day
 - Criminal Sentences - 2020 to Present Day
 - Cases Filed over 10 years (criminal cases)
 - Warrants over 10 years (active/issued)
 - Transport Orders
 - Landlord Tenant Evictions + Map
 - District Court Probate Cases - 2019 to Present Day
- ❑ **Bernalillo County**
 - MDC Inmate Information
- ❑ **Sandoval County**
 - Inmate information
- ❑ **San Juan County**
 - Arrests
 - Bookings
 - Booking Sheets
 - Criminal Complaint
 - Probable Cause
 - DA Case Referral Form
 - Cases
 - DWI
 - Traffic Citations
 - Vehicles
 - Warrants
- ❑ **Department of Public Safety**
 - State ID (SID)



5

Visualizations Bring Data to Life - Maps



A geographic view of the active warrants dataset

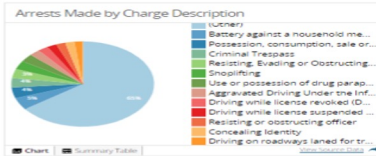
Create maps based on data points, and zoom in to see more specific information

You can deep dive into the base data behind the map

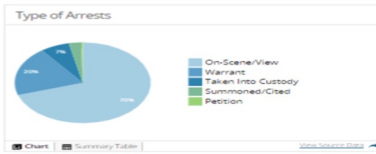
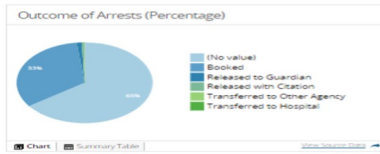


6

More Visualization Tools



Often times the data only tells part of the story due to missing data or nulls in the data. Example: The outcome of arrests are based on the arrest status supplied in the data. The last chart shows 65% of arrests (=23,606 arrests) had no data in the arrest status. Taking those 23,606 arrests and looking at other data available, we found that 20% of those were arrested on a warrant, 7% were taken into custody and approximately 3% were either cited, summoned or petitioned. Still leaving over 16,000 without an outcome.



This dataset does not contain information about the location of these arrests or demographics on those arrested. When necessary data is not available in a single data source; you can work with the data owner to add the data needed, look for the data from other sources and/or join the datasets.

For the arrest and booking data in this county, the jail/detention center has booking data so let's take a look at it.

Users can create visualizations based on data points

This is a visualization using the arrest dataset

You can deep dive into the base data behind the map



7

Data That Tells a Story



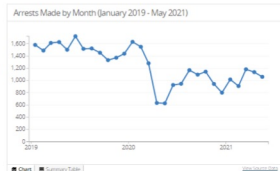
County Arrest and Jail Trends

Over the past decade or so, there have been a number of changes made in an attempt to reform the Criminal Justice System throughout the country, as well as here in New Mexico. The decision to make many of those changes was based on trends shown in arrest and jail data. That same data is reviewed on a regular basis to track the impact those changes are having.

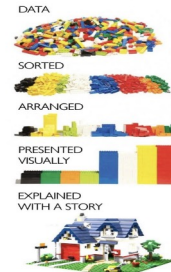
Let's take a look at data from a county within New Mexico to see what the trends were over the past couple of years.

Arrests

The arrest data from local law enforcement shows that there was a steep decline in arrests at the beginning of the pandemic. In May of 2020, arrests hit a low of four arrests. Although arrests have climbed since, they are not back to the pre-pandemic levels.



The Difference between Raw Data and the Stories Data can tell. :)



Create stories based on datasets, to provide a narrative about the data



8

What's In It For You & Your Organization

- Access to Court Data**
 - Hourly updates on hearing scheduled or canceled
 - Daily updates to transport orders
 - Daily updates to warrants issued, canceled or quashed
 - Daily updates to domestic violence restraining orders issued or terminated
- Access to other Justice Partners Agency Data**
 - Inmate data
 - Ability to match individuals against other case or jail management systems
- Access to State ID (SID)**
 - Used as the primary key for matching records
- Provide statistical reports**
 - New Mexico Sentencing Commission
 - Other state or local justice partners
- Tools to provide an analytical view and tell a story about your data**
 - Performance measures
 - Dashboard of your data



Ready to Sign Up? Here's How

Justice Partner = State, municipal (per NMSA 1978, Section 3-1-2(G)) or federal law enforcement, corrections agencies, compliance programs (per NMSA 1978, Section 31-20-5.1), municipal judges and court staff, and any state or federal agency involved in adult, family or child welfare.

Gain access to the dataXchange platform by submitting an [Agency MOU](#) and [Justice Partner Application](#) to the JID Service Desk at helpdesk@nmcourts.gov

dataXchange Access

- Access to the platform and its data are managed for security and confidentiality. Participation requires acknowledgement and agreement**
- If you are a justice partner agency leader: Signed Memo of Understanding
- If you are a justice partner IT lead: Complete the JP Application
- AOC will provide unique login credentials
- Participants are required to access and use the platform responsibly



Then What Happens?

- ❑ Your IT Staff will be needed to set up your connection and publish data
- ❑ We can help if your IT Staff is not available
- ❑ We also have training available!
 - ❑ Data Wrangler
 - ❑ Technical data analyst who transforms data from one form into another with the intent of making it more usable and valuable for visualization, aggregation, and analytics.
 - ❑ Data Storyteller
 - ❑ Learn skills to inform and engage your audience with data visualizations.
 - ❑ Data Ambassador
 - ❑ Lead organizational efforts with data and merge business with data science



11

For More Information

Questions about the dataXchange platform or want to schedule a demo?
Please contact the individuals listed below:

Genevieve Grant
AOC-JID Technical Support Manager
505-690-7094
ggrant@nmcourts.gov

Darla Goar
AOC-JID IT Business Analyst Sr.
505-819-8266
dgoar@nmcourts.gov



12